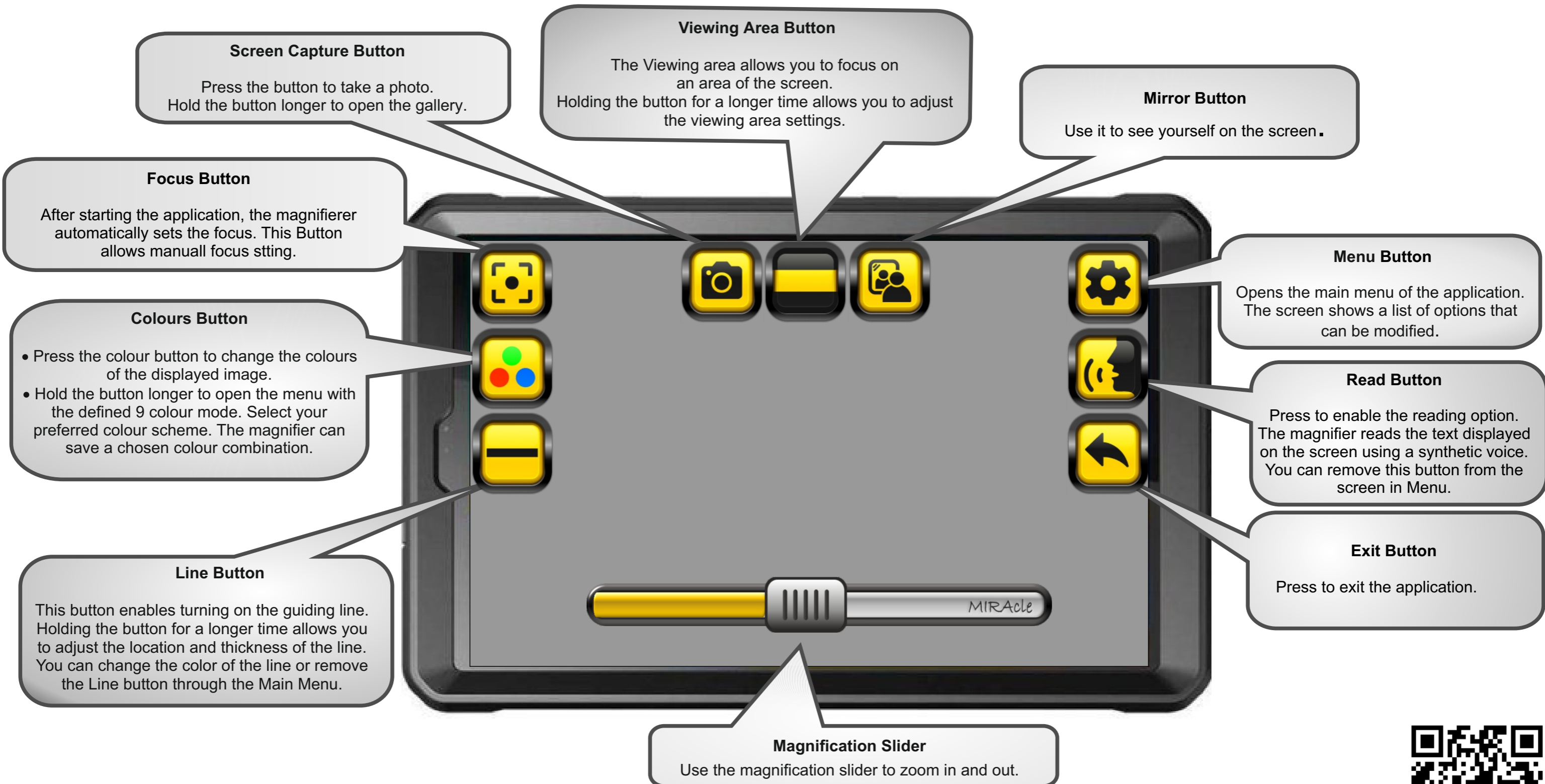


MIRAcle

EXIGO 3 Quick Start Guide



Before you start using the Exigo 3 magnifier, read this Quick Start Guide.



First Use

After removing the magnifier from the packaging, you should:

1. Spread the legs of the magnifier and place it on a level surface, such as a desk.
2. Lift the upper screen. The ball head on which the upper screen is mounted on, has knobs to adjust the position of the screen and adjust the resistance of the screen movement. This allows you to fine tune the position of the screen.
3. Adjust the lower screen to a position comfortable for working. The screen is mounted on an adjustable hinge, if it drops or is too tight, adjust the screen hinge bolt with the supplied Allen Key.
4. Press the on/off buttons to turn on both of the screens.
5. Switch the lower light switch to the on position to turn on screen lighting. It is recommended to turn on the screen lighting when using false colours.
6. Start the magnifier application by pressing the button on the screen.

You can start using the device right away, as the magnifier is supplied with partially charged batteries.

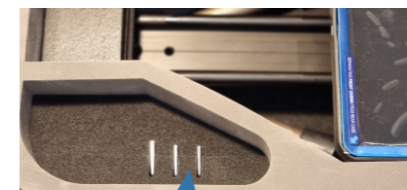
Charging the Device

Battery operating time is minimum 6 hours on fully charged batteries. It takes approximately 3 hours to fully charge the device. Each screen is charged with a magnetic cable, they are convenient to use, but the cables and the charging sockets are sensitive to dirt. If there are problems with charging, clean the connectors. Do not bend the cables unnecessarily, this shortens their life, or may cause the cable to break.

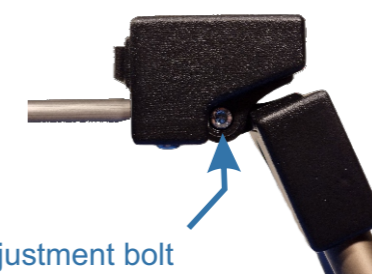
After prolonged use, the cables may need to be replaced. There is a separate DC 2.1/5.5 cable for charging the illuminator. Use only the supplied cables to charge the magnifier. Using cable or charger different than supplied may damage the device.

Adjustable hinges

The magnifier is equipped with adjustable and durable bottom screen and leg hinges, guaranteeing comfortable operation throughout the lifetime of the magnifier. Your new magnifier has factory-adjusted hinges. During the first period of use it may be necessary to correct the resistance of the hinges by tightening the adjustment screws slightly. The adjustment Allen keys are included with the magnifier. The hinges can always be adjusted to suit your needs. If your screen is sagging or the legs are too loose it is essential to tighten the appropriate adjustment bolts.



Allen keys for hinge adjustment



Adjustment bolt of leg hinge



Screen hinge adjustment bolt

European Union WEEE Directive 2002/96 of 27 January 2003 on waste electrical and electronic equipment.

When your product is marked with the symbol as below, it means:



- Waste electrical and electronic equipment should not be combined with household waste.
- There is a separate waste collection system for this type of waste.
- According to the law, electronic and electrical waste must not be mixed with other waste, which endangers the environment.

Used batteries should be separated from normal household waste and disposed of in a suitable container intended for this purpose.



MIRacle Sp.J.
ul. Piotrkowska 145
90-434 Łódź, Poland
tel.: +48725253535